
Cell Line Data Sheet for COG-N-628x

Cell Line Name: COG-N-628x

Disease: Neuroblastoma
Phase of Therapy: Diagnosis
Treatment: None
Disease Stage: 4
Source of Culture: Bone Marrow (left draw)
Primary Tumor Site: Kidney, NOS
Date Established: August 2016

MYCN Status: Amplified
TH expression: Positive

Gender: Female
Age: 2.4 years
Race: NA

Strain of Mice: NSG or Atymic NuNu mice (recommended)
Injection Type: Subcutaneous
Growth Properties: Grows well, ~3-4 months to 1500mm³
Please see Protocols section at <https://www.cccells.org/protocols.php>

Human vs. Mouse This PDX model has been tested and confirmed over multiple passages to be above 97% human cells.

STR Profile: May be obtained at <https://strdb.cccells.org/>

Notes: The Childhood Cancer Repository has a matching cell line available from this same patient – COG-N-628

Cell Line Data Sheet for COG-N-628x

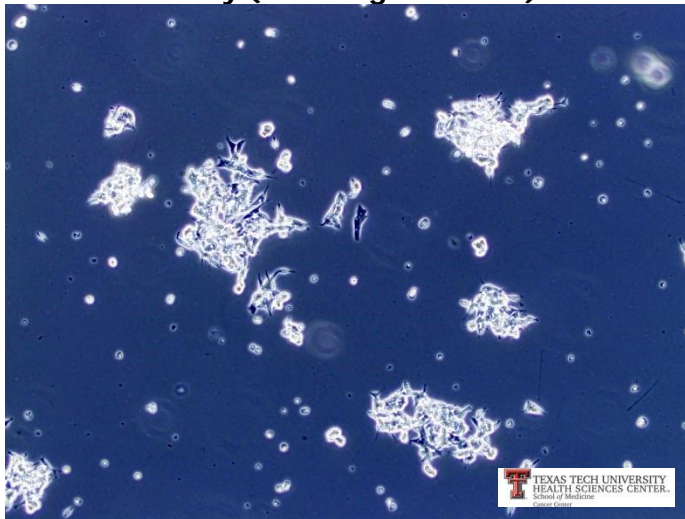
Cell Line Name: COG-N-628x

References:

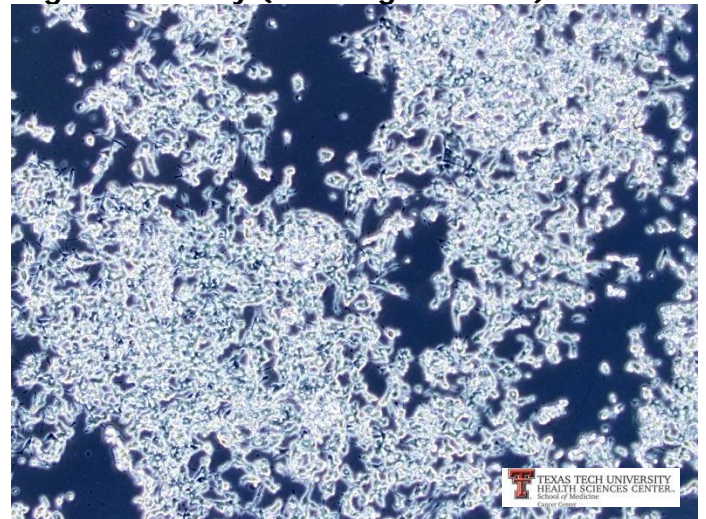
Cell Line Data Sheet for COG-N-628x

Cell Line Name: COG-N-628x

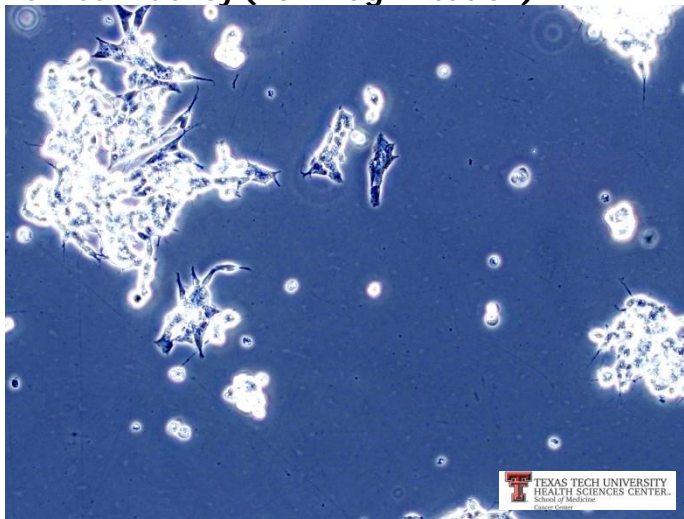
Low confluency (10x magnification)



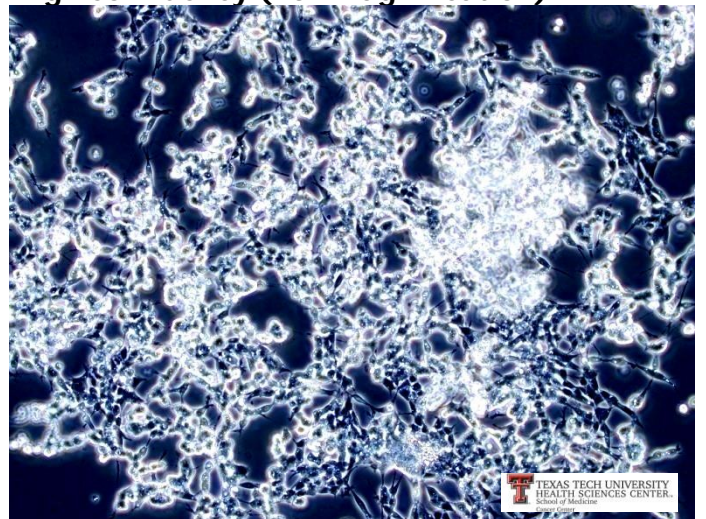
High confluency (10x magnification)



Low confluency (20x magnification)



High confluency (20x magnification)



FINAL REPORT OF LABORATORY EXAMINATION

4011 Discovery Drive, Columbia, MO 65201

1-800-669-0825 1-573-499-5700

idxxbioanalytics@idexx.com

www.idexxbioanalytics.com

IDEXX BioAnalytics Case # 9128-2021

Received Date: 3/16/2021

Completed: 3/17/2021

Submitted By

Jonas Nance
 Texas Tech University Health Sciences Center
 3601 4th St
 Lubbock, TX 79430

Phone: 806-544-0629
 Email: Jonas.Nance@TTUHSC.edu

Specimen Description

Species: human
 Description: Cells

Purchase Order #: P0857315

Number of Specimens/Animals: 15

Client ID	Investigator	Room #	Species
COG-N-624x	Nance	LARC	human
COG-N-623x	Nance	LARC	human
COG-N-619x	Nance	LARC	human
COG-N-628x	Nance	LARC	human
COG-N-625x	Nance	LARC	human
COG-N-615x	Nance	LARC	human
COG-N-627x	Nance	LARC	human
COG-N-660x	Nance	LARC	human
COG-N-669x	Nance	LARC	human
COG-N-672x	Nance	LARC	human
COG-N-685x	Nance	LARC	human
COG-N-579x	Nance	LARC	human
COG-N-546x	Nance	LARC	human
COG-N-700x	Nance	LARC	human
COG-N-727x	Nance	LARC	human

Services/Tests Performed: h-IMPACT Profile I (1-15)

PCR evaluation for: *Corynebacterium bovis*, *Corynebacterium* sp. (HAC2), EBV, HAdV, Hantaan, HCMV, Hepatitis A, Hepatitis B, Hepatitis C, HHV 6, HHV 8, HIV1, HIV2, HPV16, HPV18, HSV 1, HSV 2, HTLV 1, HTLV 2, LCMV, *Mycoplasma* sp., Seoul, Sin Nombre, *Treponema pallidum*, VZV

Summary: All test results were negative.

PCR EVALUATION

cells	COG-N-624x	COG-N-623x	COG-N-619x	COG-N-628x
EBV	-	-	-	-
HAdV	-	-	-	-
HCMV	-	-	-	-
Hepatitis A	-	-	-	-
Hepatitis B	-	-	-	-
Hepatitis C	-	-	-	-
HHV 6	-	-	-	-
HHV 8	-	-	-	-
HIV1	-	-	-	-
HIV2	-	-	-	-
HPV16	-	-	-	-
HPV18	-	-	-	-
HSV 1	-	-	-	-
HSV 2	-	-	-	-
HTLV 1	-	-	-	-
HTLV 2	-	-	-	-
VZV	-	-	-	-
<i>Corynebacterium bovis</i>	-	-	-	-
<i>Corynebacterium</i> sp. (HAC2)	-	-	-	-
Hantaan	-	-	-	-
LCMV	-	-	-	-
<i>Mycoplasma</i> sp.	-	-	-	-
Seoul	-	-	-	-
Sin Nombre	-	-	-	-
<i>Treponema pallidum</i>	-	-	-	-

cells	COG-N-625x	COG-N-615x	COG-N-627x	COG-N-660x
EBV	-	-	-	-
HAdV	-	-	-	-
HCMV	-	-	-	-
Hepatitis A	-	-	-	-
Hepatitis B	-	-	-	-
Hepatitis C	-	-	-	-
HHV 6	-	-	-	-
HHV 8	-	-	-	-
HIV1	-	-	-	-
HIV2	-	-	-	-
HPV16	-	-	-	-

cells	COG-N-625x	COG-N-615x	COG-N-627x	COG-N-660x
HPV18	-	-	-	-
HSV 1	-	-	-	-
HSV 2	-	-	-	-
HTLV 1	-	-	-	-
HTLV 2	-	-	-	-
VZV	-	-	-	-
<i>Corynebacterium bovis</i>	-	-	-	-
<i>Corynebacterium</i> sp. (HAC2)	-	-	-	-
Hantaan	-	-	-	-
LCMV	-	-	-	-
<i>Mycoplasma</i> sp.	-	-	-	-
Seoul	-	-	-	-
Sin Nombre	-	-	-	-
<i>Treponema pallidum</i>	-	-	-	-

cells	COG-N-669x	COG-N-672x	COG-N-685x	COG-N-579x
EBV	-	-	-	-
HAdV	-	-	-	-
HCMV	-	-	-	-
Hepatitis A	-	-	-	-
Hepatitis B	-	-	-	-
Hepatitis C	-	-	-	-
HHV 6	-	-	-	-
HHV 8	-	-	-	-
HIV1	-	-	-	-
HIV2	-	-	-	-
HPV16	-	-	-	-
HPV18	-	-	-	-
HSV 1	-	-	-	-
HSV 2	-	-	-	-
HTLV 1	-	-	-	-
HTLV 2	-	-	-	-
VZV	-	-	-	-
<i>Corynebacterium bovis</i>	-	-	-	-
<i>Corynebacterium</i> sp. (HAC2)	-	-	-	-
Hantaan	-	-	-	-
LCMV	-	-	-	-
<i>Mycoplasma</i> sp.	-	-	-	-
Seoul	-	-	-	-
Sin Nombre	-	-	-	-
<i>Treponema pallidum</i>	-	-	-	-

cells	COG-N-546x	COG-N-700x	COG-N-727x
EBV	-	-	-
HAdV	-	-	-
HCMV	-	-	-
Hepatitis A	-	-	-
Hepatitis B	-	-	-
Hepatitis C	-	-	-
HHV 6	-	-	-
HHV 8	-	-	-
HIV1	-	-	-
HIV2	-	-	-
HPV16	-	-	-
HPV18	-	-	-
HSV 1	-	-	-
HSV 2	-	-	-
HTLV 1	-	-	-
HTLV 2	-	-	-
VZV	-	-	-
<i>Corynebacterium bovis</i>	-	-	-
<i>Corynebacterium</i> sp. (HAC2)	-	-	-
Hantaan	-	-	-
LCMV	-	-	-
<i>Mycoplasma</i> sp.	-	-	-
Seoul	-	-	-
Sin Nombre	-	-	-
<i>Treponema pallidum</i>	-	-	-

Legend: + = positive - = negative id:id = pooled sample range id+id+id = non-range pooled sample NT or blank = no test performed sus = suspect wps = weak positive XX = Testing in progress