

Cell Line Data Sheet for COG-N-679

Cell Line Name: COG-N-679

Disease: Neuroblastoma
Phase of Therapy: Diagnosis
Treatment: ANBL00B1 (20180125)
Disease Stage: 4
Source of Culture: Bone Marrow
Primary Tumor Site: Connective, subcutaneous and other soft tissues of abdomen
Date Established: March 2018 (surgery January 2018)

MYCN Status:
TH expression:
p53 status:

Gender:
Age: 1679 days
Race: NA

Growth Conditions: Please see Protocols section at <https://www.cccells.org/protocols.php>
5% CO₂, 20% O₂, 37.0°C

Media Formulation: Please see Protocols section at <https://www.cccells.org/protocols.php>
Cells are grown in a base medium of Iscove's Modified Dulbecco's Medium plus the following supplements (to a final concentration):
20% Fetal Bovine Serum, 4mM L-Glutamine,
1X ITS (5 µg/mL insulin, 5 µg/mL transferrin, 5 ng/mL selenous acid)

Doubling Time: 20% O₂ – 301 hours 5% O₂ – 112 hours 2% O₂ – 257 hours
Morphology: Spheres in suspension
Growth Properties

STR Profile: May be obtained at <https://strdb.cccells.org/>

Notes: The Childhood Cancer Repository has a matching hypoxic cell line grown at 5% O₂ available from this same patient – COG-N-679h.
The Childhood Cancer Repository has a matching hypoxic cell line grown at 2% O₂ available from this same patient – COG-N-679h2.

Cell Line Data Sheet for COG-N-679

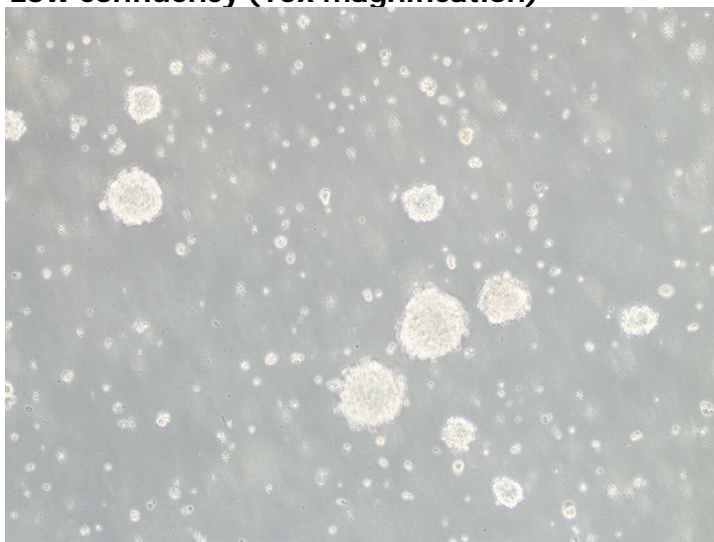
Cell Line Name: COG-N-679

References:

Cell Line Data Sheet for COG-N-679

Cell Line Name: COG-N-679

Low confluency (10x magnification)



Low confluency (20x magnification)

