
Cell Line Data Sheet for COG-N-619

Cell Line Name: COG-N-619

Disease: Neuroblastoma
Phase of Therapy: Progressive Disease (Post-XRT)
Treatment: ANBL00B1 (20150616)
Disease Stage: 4
Source of Culture: Right Bone Marrow
Primary Tumor Site: Suprarenal Gland
Date Established: April 2016 (surgery February 2016)

MYCN Status:
TH expression:
p53 status:

Gender: Male
Age: 990 days
Race: NA

Growth Conditions: Please see Protocols section at <https://www.cccells.org/protocols.php>
5% CO₂, 20% O₂, 37.0°C

Media Formulation: Please see Protocols section at <https://www.cccells.org/protocols.php>
Cells are grown in a base medium of Iscove's Modified Dulbecco's Medium plus the following supplements (to a final concentration):
20% Fetal Bovine Serum, 4mM L-Glutamine,
1X ITS (5 µg/mL insulin, 5 µg/mL transferrin, 5 ng/mL selenous acid)

Doubling Time: 20%O₂ – 95 hours 5%O₂ – 94 hours 2%O₂ – 81 hours
Morphology:
Growth Properties

STR Profile: May be obtained at <https://strdb.cccells.org/>

Notes: The Childhood Cancer Repository has a matching hypoxic cell line grown at 5% O₂ available from this same patient – COG-N-619h.
The Childhood Cancer Repository has a matching hypoxic cell line grown at 2% O₂ available from this same patient – COG-N-619h2.
The Childhood Cancer Repository has a matching PDX available from this same patient – COG-N-619x.
The Childhood Cancer Repository has matching hypoxic cell lines and PDX established from this same patient's left bone marrow – COG-N-618.

Cell Line Data Sheet for COG-N-619

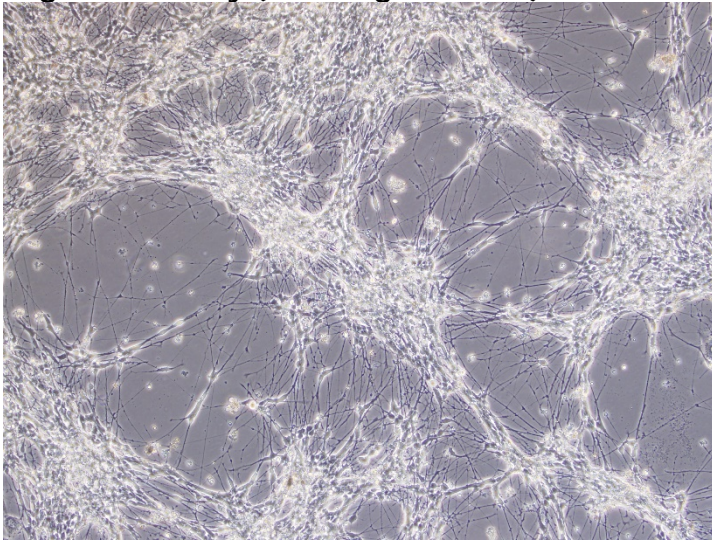
Cell Line Name: COG-N-619

References:

Cell Line Data Sheet for COG-N-619

Cell Line Name: COG-N-619

High confluency (10x magnification)



High confluency (20x magnification)

