
Cell Line Data Sheet for FU-NB-2006

Disease: Neuroblastoma
Phase of Therapy: Progressive disease, post-mortem
Treatment: N/A
Disease Stage: N/A
Gender: Female
Age at diagnosis: N/A
Race: N/A
Age at sample collection: N/A
Source of Culture: Peripheral blood
Primary Tumor Site: N/A
Date Established: September 2006

MYCN Patient: N/A
MYCN Cell line: N/A
THRNA: N/A
p53 functionality: N/A
Telomere Mechanism: N/A
ALK: N/A
RNAseq: N/A
WES: N/A

Growth Conditions: Please see Protocols section at <https://www.cccells.org/protocols.php>
 5% CO₂, 20% O₂, 37.0°C; 5% CO₂, 5% O₂, 37.0°C

Media Formulation: Please see Protocols section at <https://www.cccells.org/protocols.php>
 Cells are grown in a base medium of Iscove's Modified Dulbecco's Medium plus the following supplements (to a final concentration): 20% Fetal Bovine Serum, 4mM L-Glutamine, 1X ITS (5 µg/mL insulin, 5 µg/mL transferrin, 5 ng/mL selenous acid)

Doubling Time: 20% O₂-48 hours 5% O₂-N/A

Growth Properties: Adherent

STR Profile: May be obtained at <https://strdb.cccells.org/>

Notes: The Childhood Cancer Repository has a matching hypoxic cell line grown at 5% O₂ available from this same patient – FU-NB-2006

All COG Repository cell lines are antibiotic-free, mycoplasma-free, and cryopreserved in 50% FBS / 7.5% DMSO. Each vial label contains the cell line name, passage number, total viable cell count (usually 5-10e6), the overall cell viability, and date frozen. All cell lines are validated with original patient sample by STR analysis

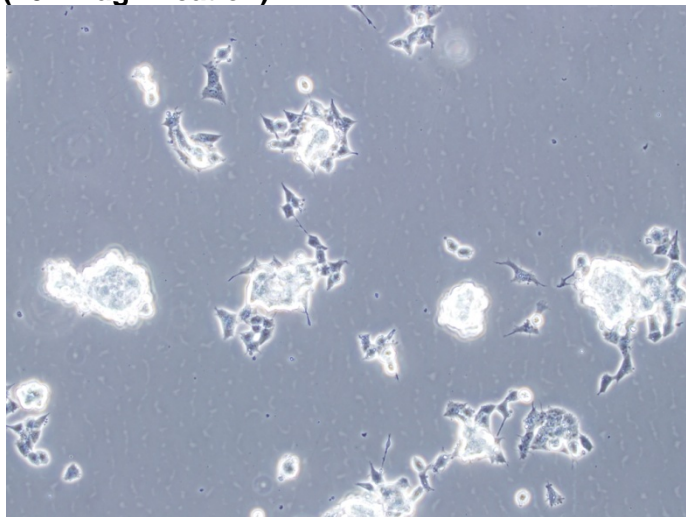


Cell Line Data Sheet for FU-NB-2006

References:

Cell Line Data Sheet for FU-NB-2006

(10x magnification)



(20x magnification)

