

## Cell Line Data Sheet for CHLA-247

|                                  |   |
|----------------------------------|---|
| <b>Disease:</b>                  | Neuroblastoma   |
| <b>Phase of Therapy:</b>         | Progressive disease   |
| <b>Treatment:</b>                | N/A   |
| <b>Disease Stage:</b>            | N/A   |
| <b>Gender:</b>                   | Male  |
| <b>Age at diagnosis:</b>         | NA  |
| <b>Race:</b>                     | N/A   |
| <b>Age at sample collection:</b> | N/A   |
| <b>Source of Culture:</b>        | Bone Marrow   |
| <b>Primary Tumor Site:</b>       | N/A   |
| <b>Date Established:</b>         | N/A   |
| <br>                             |   |
| <b>MYCN Patient:</b>             | Amplified   |
| <b>MYCN Cell line:</b>           | N/A   |
| <b>THmRNA:</b>                   | Expressed   |
| <b>p53 functionality:</b>        | N/A   |
| <b>Telomere Mechanism:</b>       | N/A   |
| <b>ALK:</b>                      | WT  |
| <b>RNAseq:</b>                   | N/A   |
| <b>WES:</b>                      | N/A   |
| <br>                             |   |
| <b>IC90 (DIMSCAN*):</b>          | N/A   |
| <br>                             |   |
| <b>Growth Conditions:</b>        | Please see Protocols section at <a href="https://www.cccells.org/protocols.php">https://www.cccells.org/protocols.php</a><br>5% CO <sub>2</sub> , 20% O <sub>2</sub> , 37.0°C   |
| <b>Media Formulation:</b>        | Please see Protocols section at <a href="https://www.cccells.org/protocols.php">https://www.cccells.org/protocols.php</a><br>Cells are grown in a base medium of Iscove's Modified Dulbecco's Medium plus the following supplements (to a final concentration): 20% Fetal Bovine Serum, 4mM L-Glutamine, 1X ITS (5 µg/mL insulin, 5 µg/mL transferrin, 5 ng/mL selenous acid) |
| <br>                             |   |
| <b>Doubling Time:</b>            | N/A   |
| <b>Growth Properties:</b>        | Adherent and floating   |
| <br>                             |   |
| <b>STR Profile:</b>              | May be obtained at <a href="https://strdb.cccells.org/">https://strdb.cccells.org/</a>  |
| <b>Notes:</b>                    | The Childhood Cancer Repository has a matching cell line available from this same patient – CHLA-253.   |

All COG Repository cell lines are antibiotic-free, mycoplasma-free, and cryopreserved in 50% FBS / 7.5% DMSO. Each vial label contains the cell line name, passage number, total viable cell count (usually 5-10e6), the overall cell viability, and date frozen. All cell lines are validated with original patient sample by STR analysis



---

## Cell Line Data Sheet for CHLA-247

---

**Cell Line Name:** CHLA-247

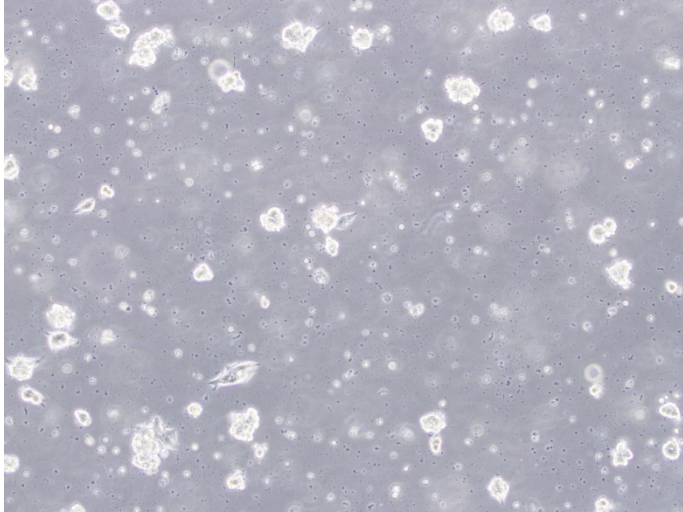
**References:**

---

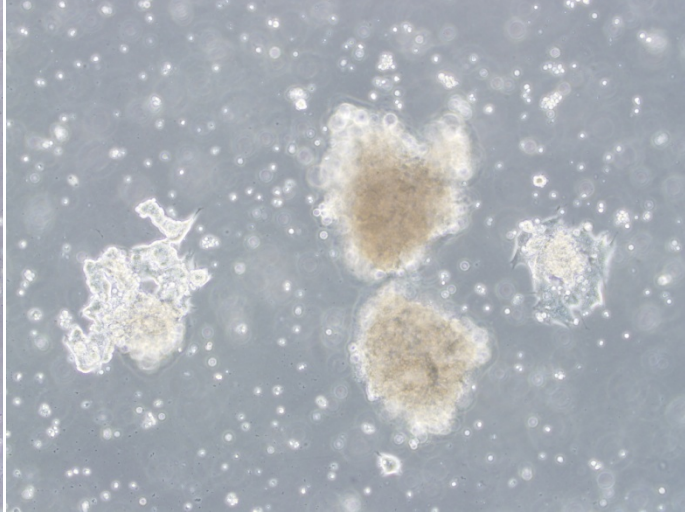
## Cell Line Data Sheet for CHLA-247

---

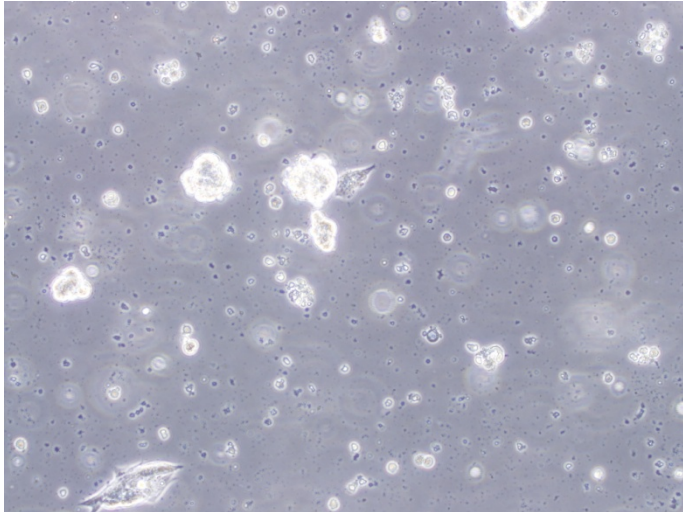
(10x Magnification)



(10x Magnification)



(20x Magnification)



(20x Magnification)

