

## Cell Line Data Sheet for CHLA-12

**Disease:** Neuroblastoma  
**Phase of Therapy:** Progressive disease at bone marrow transplant, post mortem  
**Treatment:** N/A  
**Disease Stage:** 4  
**Gender:** Female  
**Age at diagnosis:** NA  
**Race:** N/A  
**Age at sample collection:** N/A  
**Source of Culture:** N/A  
**Primary Tumor Site:** Bone Marrow  
**Date Established:** N/A

**MYCN Patient:** Amplified  
**MYCN Cell line:** N/A  
**THmRNA:** Expressed  
**p53 functionality:** N/A  
**Telomere Mechanism:** N/A  
**ALK:** WT  
**RNAseq:** N/A  
**WES:** N/A

**Growth Conditions:** Please see Protocols section at <https://www.cccells.org/protocols.php>  
 5% CO<sub>2</sub>, 20% O<sub>2</sub>, 37.0°C

**Media Formulation:** Please see Protocols section at <https://www.cccells.org/protocols.php>  
 Cells are grown in a base medium of Iscove's Modified Dulbecco's Medium plus the following supplements (to a final concentration): 20% Fetal Bovine Serum, 4mM L-Glutamine, 1X ITS (5 µg/mL insulin, 5 µg/mL transferrin, 5 ng/mL selenous acid)

**Doubling Time:** 65 hours

**Growth Properties:** Floating, some clumping/adhering together

**STR Profile:** May be obtained at <https://strdb.cccells.org/>

**Notes:** The Childhood Cancer Repository has a matching direct-to-culture diagnosis cell line available from this same patient – CHLA-8 and CHLA-12. The repository has a matching EBV lymphoblastoid cell line – COG-V-437

All COG Repository cell lines are antibiotic-free, mycoplasma-free, and cryopreserved in 50% FBS / 7.5% DMSO. Each vial label contains the cell line name, passage number, total viable cell count (usually 5-10e6), the overall cell viability, and date frozen. All cell lines are validated with original patient sample by STR analysis



---

## Cell Line Data Sheet for CHLA-12

---

**Cell Line Name:** CHLA-12

**References:**

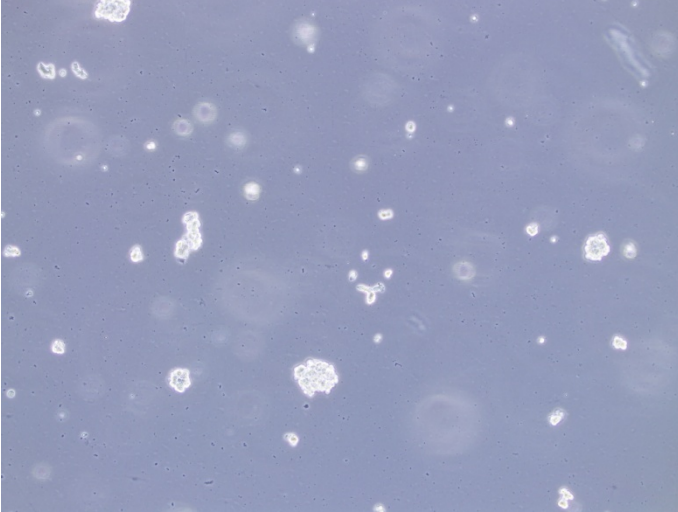
---

## Cell Line Data Sheet for CHLA-12

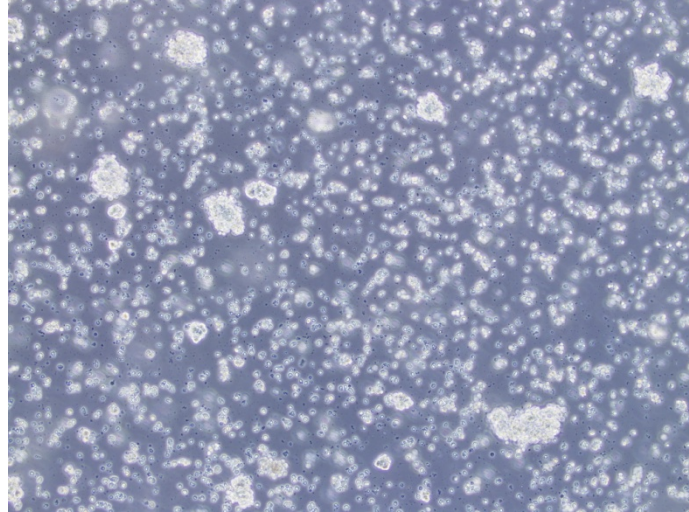
---

Cell Line Name: CHLA-12

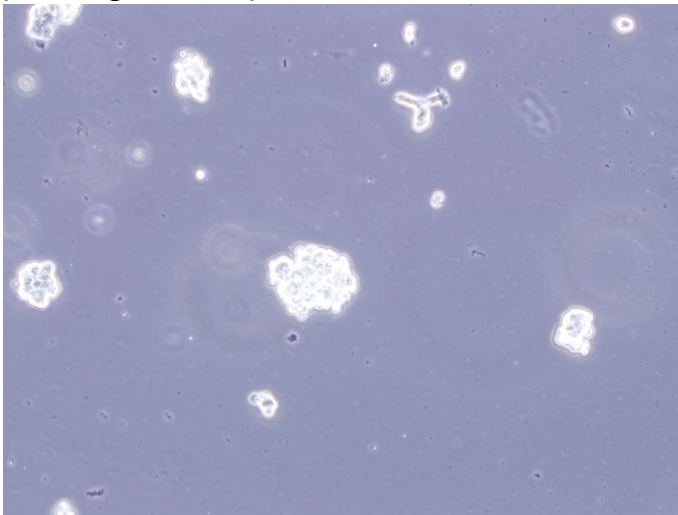
(10x Magnification)



(10x Magnification)



(20x Magnification)



(20x Magnification)

