

---

## Cell Line Data Sheet for COG-N-627x

---

**Cell Line Name:** COG-N-627x

**Disease:** Neuroblastoma  
**Phase of Therapy:** Diagnosis  
**Treatment:** None  
**Disease Stage:** 4  
**Source of Culture:** Tumor  
**Primary Tumor Site:** Abdomen, NOS  
**Date Established:** May 2017

**MYCN Status:** Amplified  
**TH expression:** Positive

**Gender:** Male  
**Age:** 3.12 years  
**Race:** NA

**Strain of Mice:** NSG only  
**Injection Type:** Subcutaneous  
**Growth Properties:** Glows slowly  
Please see Protocols section at <https://www.cccells.org/protocols.php>

**Human vs. Mouse** This PDX model has been tested and confirmed over multiple passages to be above 96% human cells

**STR Profile:** May be obtained at <https://strdb.cccells.org/>

**Notes:** The Childhood Cancer Repository has a matching cell line available from this same patient – COG-N-627hnb

---

## Cell Line Data Sheet for COG-N-627x

---

Cell Line Name: COG-N-627x

References:

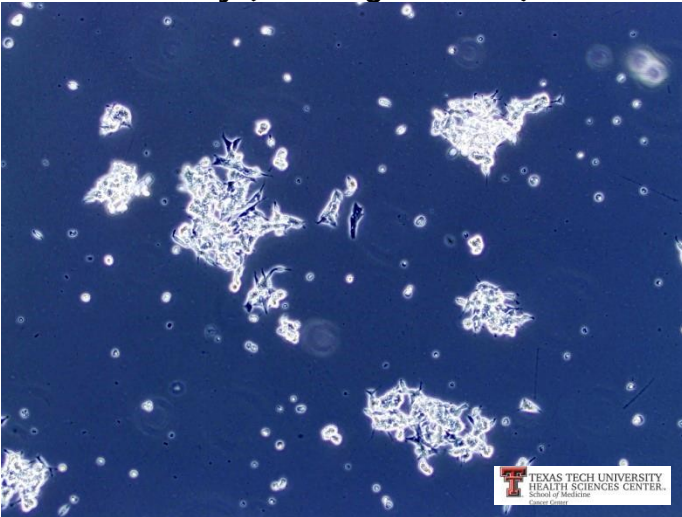
---

## Cell Line Data Sheet for COG-N-627x

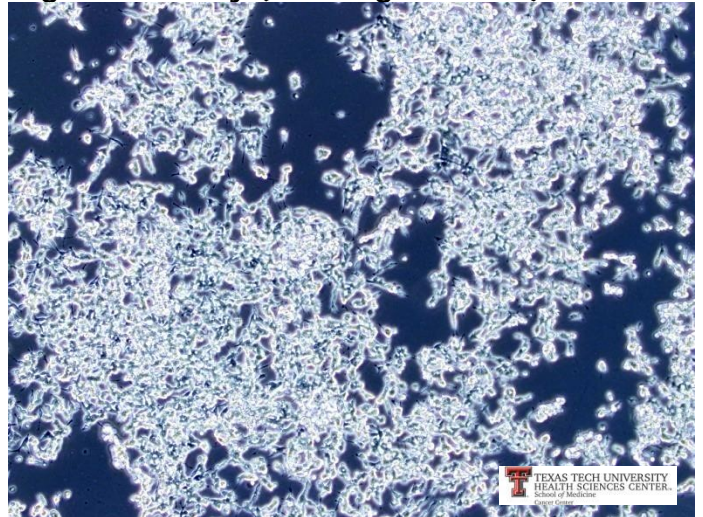
---

Cell Line Name: COG-N-627x

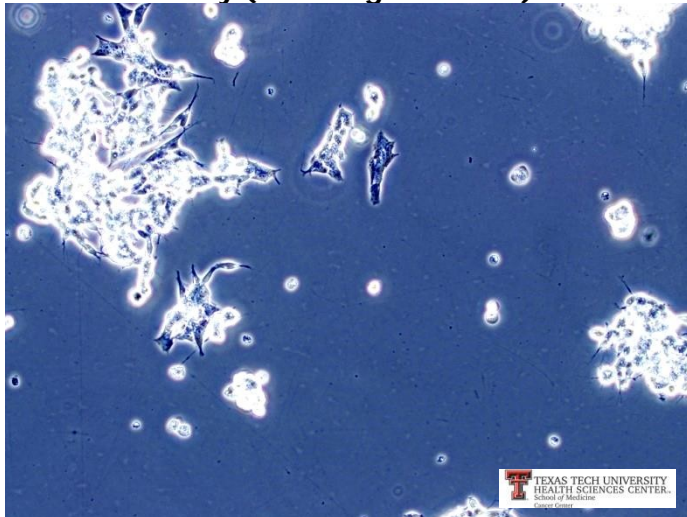
**Low confluency (10x magnification)**



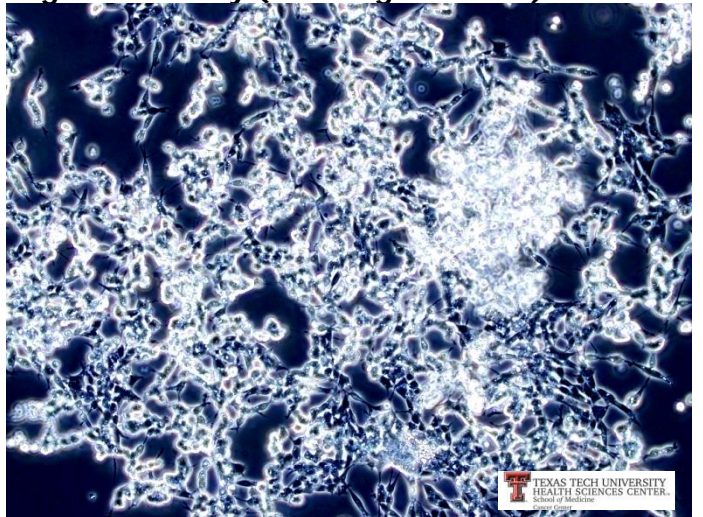
**High confluency (10x magnification)**



**Low confluency (20x magnification)**



**High confluency (20x magnification)**



FINAL REPORT OF LABORATORY EXAMINATION

4011 Discovery Drive, Columbia, MO 65201

1-800-669-0825 1-573-499-5700

[idxxbioanalytics@idexx.com](mailto:idxxbioanalytics@idexx.com)

[www.idexxbioanalytics.com](http://www.idexxbioanalytics.com)

IDEXX BioAnalytics Case # 9128-2021

Received Date: 3/16/2021

Completed: 3/17/2021

Submitted By

Jonas Nance  
Texas Tech University Health Sciences Center  
3601 4th St  
Lubbock, TX 79430

Phone: 806-544-0629  
Email: [Jonas.Nance@TTUHSC.edu](mailto:Jonas.Nance@TTUHSC.edu)

Specimen Description

Species: human  
Description: Cells

Purchase Order #: P0857315

Number of Specimens/Animals: 15

Client ID	Investigator	Room #	Species
COG-N-624x	Nance	LARC	human
COG-N-623x	Nance	LARC	human
COG-N-619x	Nance	LARC	human
COG-N-628x	Nance	LARC	human
COG-N-625x	Nance	LARC	human
COG-N-615x	Nance	LARC	human
COG-N-627x	Nance	LARC	human
COG-N-660x	Nance	LARC	human
COG-N-669x	Nance	LARC	human
COG-N-672x	Nance	LARC	human
COG-N-685x	Nance	LARC	human
COG-N-579x	Nance	LARC	human
COG-N-546x	Nance	LARC	human
COG-N-700x	Nance	LARC	human
COG-N-727x	Nance	LARC	human

Services/Tests Performed: h-IMPACT Profile I (1-15)

PCR evaluation for: *Corynebacterium bovis*, *Corynebacterium* sp. (HAC2), EBV, HAdV, Hantaan, HCMV, Hepatitis A, Hepatitis B, Hepatitis C, HHV 6, HHV 8, HIV1, HIV2, HPV16, HPV18, HSV 1, HSV 2, HTLV 1, HTLV 2, LCMV, *Mycoplasma* sp., Seoul, Sin Nombre, *Treponema pallidum*, VZV

**Summary:** All test results were negative.

## PCR EVALUATION

cells	COG-N-624x	COG-N-623x	COG-N-619x	COG-N-628x
EBV	-	-	-	-
HAdV	-	-	-	-
HCMV	-	-	-	-
Hepatitis A	-	-	-	-
Hepatitis B	-	-	-	-
Hepatitis C	-	-	-	-
HHV 6	-	-	-	-
HHV 8	-	-	-	-
HIV1	-	-	-	-
HIV2	-	-	-	-
HPV16	-	-	-	-
HPV18	-	-	-	-
HSV 1	-	-	-	-
HSV 2	-	-	-	-
HTLV 1	-	-	-	-
HTLV 2	-	-	-	-
VZV	-	-	-	-
<i>Corynebacterium bovis</i>	-	-	-	-
<i>Corynebacterium</i> sp. (HAC2)	-	-	-	-
Hantaan	-	-	-	-
LCMV	-	-	-	-
<i>Mycoplasma</i> sp.	-	-	-	-
Seoul	-	-	-	-
Sin Nombre	-	-	-	-
<i>Treponema pallidum</i>	-	-	-	-

cells	COG-N-625x	COG-N-615x	COG-N-627x	COG-N-660x
EBV	-	-	-	-
HAdV	-	-	-	-
HCMV	-	-	-	-
Hepatitis A	-	-	-	-
Hepatitis B	-	-	-	-
Hepatitis C	-	-	-	-
HHV 6	-	-	-	-
HHV 8	-	-	-	-
HIV1	-	-	-	-
HIV2	-	-	-	-
HPV16	-	-	-	-

cells	COG-N-625x	COG-N-615x	COG-N-627x	COG-N-660x
HPV18	-	-	-	-
HSV 1	-	-	-	-
HSV 2	-	-	-	-
HTLV 1	-	-	-	-
HTLV 2	-	-	-	-
VZV	-	-	-	-
<i>Corynebacterium bovis</i>	-	-	-	-
<i>Corynebacterium</i> sp. (HAC2)	-	-	-	-
Hantaan	-	-	-	-
LCMV	-	-	-	-
<i>Mycoplasma</i> sp.	-	-	-	-
Seoul	-	-	-	-
Sin Nombre	-	-	-	-
<i>Treponema pallidum</i>	-	-	-	-

cells	COG-N-669x	COG-N-672x	COG-N-685x	COG-N-579x
EBV	-	-	-	-
HAdV	-	-	-	-
HCMV	-	-	-	-
Hepatitis A	-	-	-	-
Hepatitis B	-	-	-	-
Hepatitis C	-	-	-	-
HHV 6	-	-	-	-
HHV 8	-	-	-	-
HIV1	-	-	-	-
HIV2	-	-	-	-
HPV16	-	-	-	-
HPV18	-	-	-	-
HSV 1	-	-	-	-
HSV 2	-	-	-	-
HTLV 1	-	-	-	-
HTLV 2	-	-	-	-
VZV	-	-	-	-
<i>Corynebacterium bovis</i>	-	-	-	-
<i>Corynebacterium</i> sp. (HAC2)	-	-	-	-
Hantaan	-	-	-	-
LCMV	-	-	-	-
<i>Mycoplasma</i> sp.	-	-	-	-
Seoul	-	-	-	-
Sin Nombre	-	-	-	-
<i>Treponema pallidum</i>	-	-	-	-

cells	COG-N-546x	COG-N-700x	COG-N-727x
EBV	-	-	-
HAdV	-	-	-
HCMV	-	-	-
Hepatitis A	-	-	-
Hepatitis B	-	-	-
Hepatitis C	-	-	-
HHV 6	-	-	-
HHV 8	-	-	-
HIV1	-	-	-
HIV2	-	-	-
HPV16	-	-	-
HPV18	-	-	-
HSV 1	-	-	-
HSV 2	-	-	-
HTLV 1	-	-	-
HTLV 2	-	-	-
VZV	-	-	-
<i>Corynebacterium bovis</i>	-	-	-
<i>Corynebacterium</i> sp. (HAC2)	-	-	-
Hantaan	-	-	-
LCMV	-	-	-
<i>Mycoplasma</i> sp.	-	-	-
Seoul	-	-	-
Sin Nombre	-	-	-
<i>Treponema pallidum</i>	-	-	-

Legend: + = positive - = negative id:id = pooled sample range id+id+id = non-range pooled sample NT or blank = no test performed sus = suspect wps = weak positive XX = Testing in progress