
Cell Line Data Sheet for COG-N-620x

Cell Line Name: COG-N-620x

Disease: Neuroblastoma
Phase of Therapy: Post-Chemotherapy (Progressive Disease)
Treatment: ANBL0032 (Standard isotretinoin (RA) with/without Unituxin, GM-CSF, and IL-2)
Disease Stage: 4
Source of Culture: Tumor (Brain - CNS Mets)
Primary Tumor Site: Abdomen, NOS Abdominal wall, NOS Intra-abdominal site, NOS
Date Established: April 2016

MYCN Status: Non-Amplified
TH expression: Positive

Gender: Male
Age: 5.36 years
Race: NA

Strain of Mice: NSG only
Injection Type: Subcutaneous
Growth Properties: Mice get high blood sugar; 4-6 months to 1500mm³
Please see Protocols section at <https://www.cccells.org/protocols.php>

Human vs. Mouse This PDX model has been tested and confirmed over multiple passages to be above 99% human cells

STR Profile: May be obtained at <https://strdb.cccells.org/>

Notes:

Cell Line Data Sheet for COG-N-620x

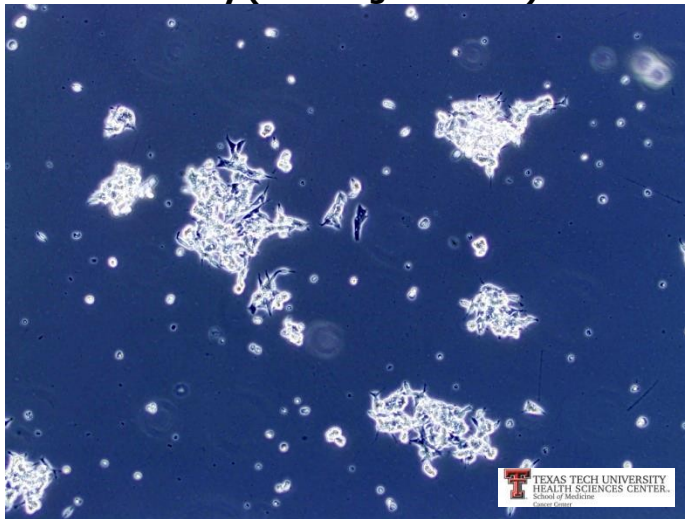
Cell Line Name: COG-N-620x

References:

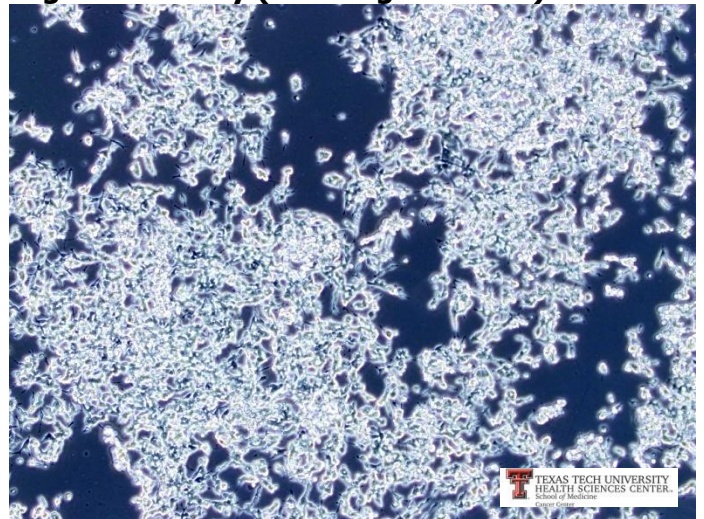
Cell Line Data Sheet for COG-N-620x

Cell Line Name: COG-N-620x

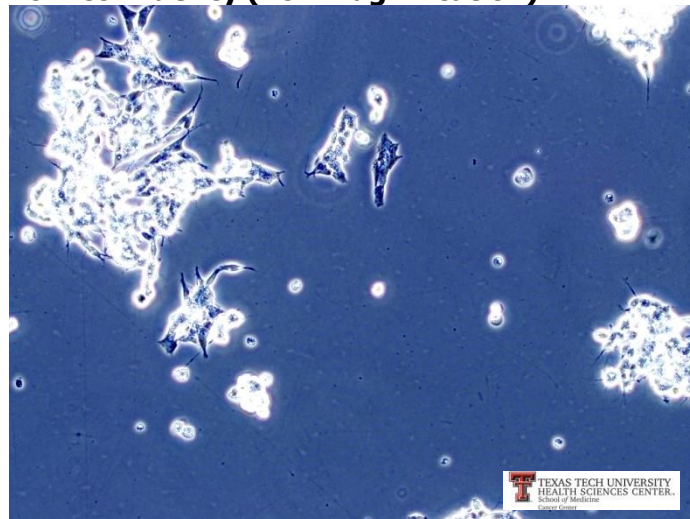
Low confluency (10x magnification)



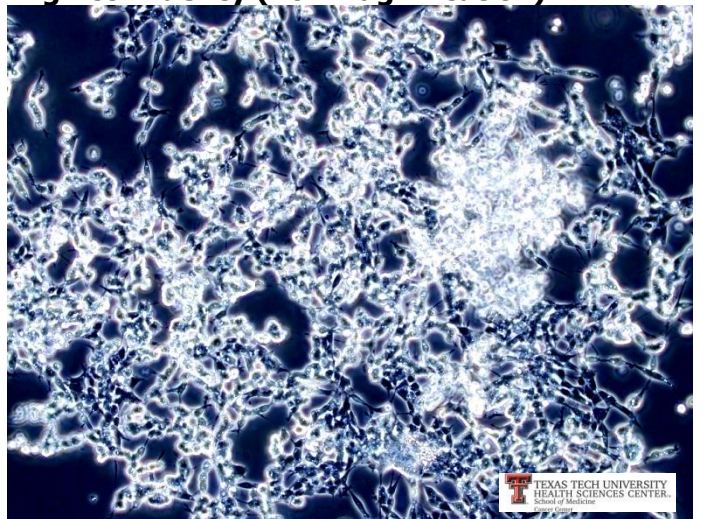
High confluency (10x magnification)



Low confluency (20x magnification)



High confluency (20x magnification)



FINAL REPORT OF LABORATORY EXAMINATION

4011 Discovery Drive, Columbia, MO 65201

1-800-669-0825 1-573-499-5700

idxxbioresearch@idexx.com

www.idexxbioresearch.com

IDEXX BioResearch Case # 14487-2016

Received: 5/18/2016

Completed: 5/25/2016

Submitted By

Heather Davidson
Texas Tech University
HSC Cancer Center
3601 4th St.
MS 9445
Lubbock, TX 79430

Phone: 806-743-2707
Fax: 806-743-2691
Email: heather.davidson@ttuhsc.edu

Specimen Description

Species: Human

Purchase Order #: P51716-1

Number of Specimens/Animals: 1

Client ID	Investigator	Date Placed	
COG-N-620x	Dr. C Patrick Reynolds	4/12/2016	p1m1

Services/Tests Performed: h-IMPACT Profile I

PCR evaluation for: EBV, HAdV, Hantaan, HCMV, Hepatitis A, Hepatitis B, Hepatitis C, HHV 6, HHV 8, HIV1, HIV2, HPV16, HPV18, HSV 1, HSV 2, HTLV 1, HTLV 2, LCMV, *Mycoplasma* sp., Seoul, Sin Nombre, *Treponema pallidum*, VZV

Summary: All test results were negative.

PCR EVALUATION

cells	COG-N-620x
EBV	-
HAdV	-
HCMV	-
Hepatitis A	-
Hepatitis B	-
Hepatitis C	-
HHV 6	-
HHV 8	-
HIV1	-
HIV2	-
HPV16	-
HPV18	-
HSV 1	-
HSV 2	-
HTLV 1	-
HTLV 2	-
VZV	-
Hantaan	-
LCMV	-
<i>Mycoplasma</i> sp.	-
Seoul	-
Sin Nombre	-
<i>Treponema pallidum</i>	-

Legend: + = positive - = negative id:id = pooled sample range id+id+id = non-range pooled sample NT or blank = no test performed wps = weak positive