
Cell Line Data Sheet for COG-N-589x

Cell Line Name: COG-N-589x

Disease: Neuroblastoma
Phase of Therapy: Diagnosis
Treatment: None
Disease Stage: 4
Source of Culture: Tumor
Primary Tumor Site: Retroperitoneum Periadrenal tissue Perinephric tissue
Date Established: March 2016

MYCN Status: Non-Amplified
TH expression: Positive

Gender: Female
Age: 4.94 years
Race: NA

Strain of Mice: NSG (recommended) or Atymic NuNu mice
Injection Type: Subcutaneous
Growth Properties: Grows slow, ~7 months to 1500mm³
Please see Protocols section at <https://www.cccells.org/protocols.php>

Human vs. Mouse This PDX model has been tested and confirmed over multiple passages to be above 97% human cells

STR Profile: May be obtained at <https://strdb.cccells.org/>

Notes:

Cell Line Data Sheet for COG-N-589x

Cell Line Name: COG-N-589x

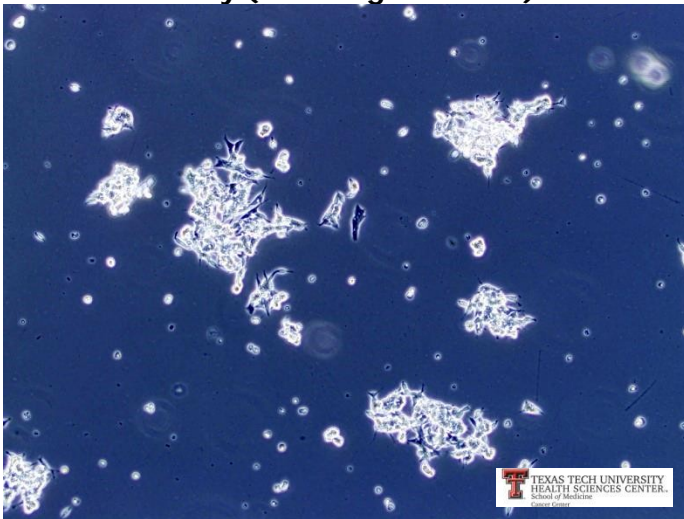
References:

1. B. Koneru, G. Lopez, A170:E170 A. Farooqi, K. L. Conkrite, T. H. Nguyen, S. J. Macha, A. Modi, J. L. Rokita, E. Urias, A. Hindle, H. Davidson, K. McCoy, J. Nance, V. Yazdani, M. S. Irwin, S. Yang, D. A. Wheeler, J. M. Maris, S. J. Diskin, C. P. Reynolds, Telomere Maintenance Mechanisms Define Clinical Outcome in High-Risk Neuroblastoma. *Cancer Res.* 2020;80:2663-2675." PMID 32291317
<https://cancerres.aacrjournals.org/content/80/12/2663.long>

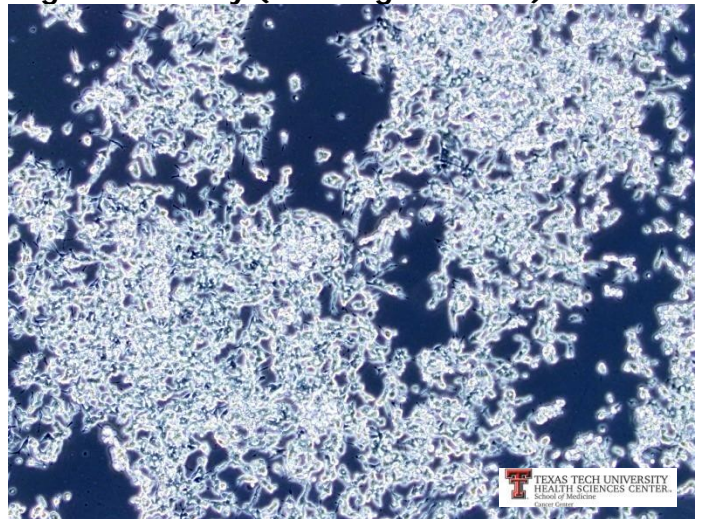
Cell Line Data Sheet for COG-N-589x

Cell Line Name: COG-N-589x

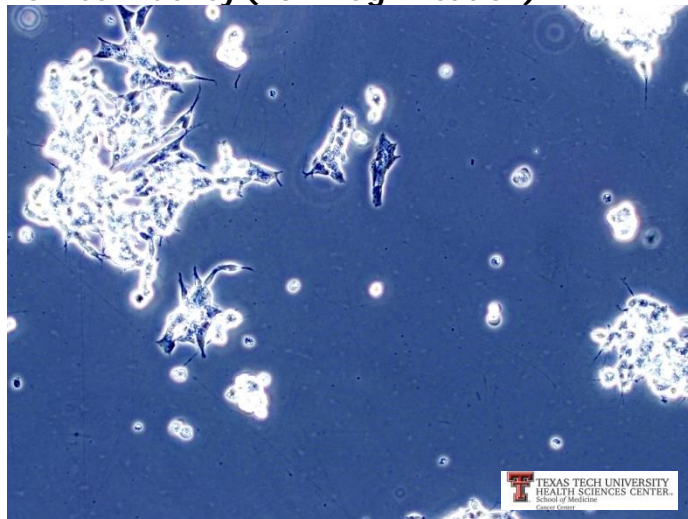
Low confluency (10x magnification)



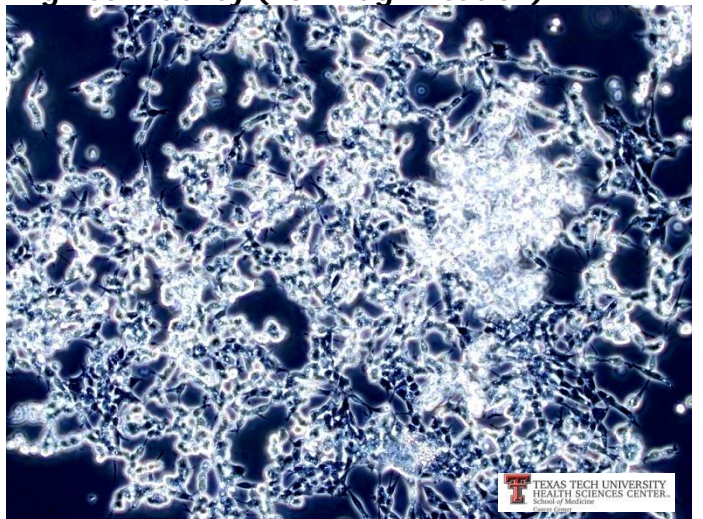
High confluency (10x magnification)



Low confluency (20x magnification)



High confluency (20x magnification)



FINAL REPORT OF LABORATORY EXAMINATION

4011 Discovery Drive, Columbia, MO 65201

1-800-669-0825 1-573-499-5700

idxxbioresearch@idexx.com www.idexxbioresearch.com

IDEXX BioResearch Case # 14488-2016

Received: 5/18/2016

Completed: 5/25/2016

Submitted By

Heather Davidson
Texas Tech University
HSC Cancer Center
3601 4th St.
MS 9445
Lubbock, TX 79430

Phone: 806-743-2707
Fax: 806-743-2691
Email: heather.davidson@ttuhsc.edu

Specimen Description

Species: Human

Purchase Order #: P51716-2

Number of Specimens/Animals: 1

Client ID	Investigator	Date Placed	
COG-N-589x	Dr. C Patrick Reynolds	3/16/2016	p1m1

Services/Tests Performed: h-IMPACT Profile I

PCR evaluation for: EBV, HAdV, Hantaan, HCMV, Hepatitis A, Hepatitis B, Hepatitis C, HHV 6, HHV 8, HIV1, HIV2, HPV16, HPV18, HSV 1, HSV 2, HTLV 1, HTLV 2, LCMV, *Mycoplasma* sp., Seoul, Sin Nombre, *Treponema pallidum*, VZV

Summary: All test results were negative.

PCR EVALUATION

cells	COG-N-589x
EBV	-
HAdV	-
HCMV	-
Hepatitis A	-
Hepatitis B	-
Hepatitis C	-
HHV 6	-
HHV 8	-
HIV1	-
HIV2	-
HPV16	-
HPV18	-
HSV 1	-
HSV 2	-
HTLV 1	-
HTLV 2	-
VZV	-
Hantaan	-
LCMV	-
<i>Mycoplasma</i> sp.	-
Seoul	-
Sin Nombre	-
<i>Treponema pallidum</i>	-

Legend: + = positive - = negative id:id = pooled sample range id+id+id = non-range pooled sample NT or blank = no test performed wps = weak positive